



# **NIRVANA ENGINEERING (Stafford)LTD.**

*Specialist Suppliers to the Standby Power, Telecomms. U P S  
and Switchgear Industries Worldwide.*

Registered Office and Works:  
Dewick's Depot, Cannock Road, Brocton, Stafford ST17 0SU.  
Tel: (01785) 660700 Fax: (01785) 661299

## **ANTI-SHOCK STAND ASSEMBLY INSTRUCTIONS**

### **CONTENTS**

- 1. DELIVERY OF STAND**
- 2. PREPARATION OF STAND PARTS**
- 3. ASSEMBLY OF STAND**
- 4. PLACEMENT OF BATTERY BLOCKS**

### **1. DELIVERY OF STAND**

- 1.1 *On receipt of consignment, remove package containing the fasteners and assembly instructions.*
- 1.2 *Check that all goods have been delivered undamaged, and inform the Sales Department at Nirvana should any part be missing or damaged.*

### **2. PREPARATION OF STAND PARTS**

- 2.1 *Separate all stand parts into their respective identities, i.e. frames, cell supporting runners, retention rails, tie bars, neoprene and fasteners.*
- 2.2 *If frames are 'handed', i.e. left or right hand end frames on a terraced stand, isolate each respective frame according to it's relative position in the stands' final location.*
- 2.3 *Ensure all threaded fixing points have been cleared of all coating, before the start of assembly.*
- 2.4 *Review the stand drawing to ensure acceptable 'visualisation' of the final stand assembly form.*

- 2.5 *Ensure all female inserts are positioned in the floor prior to stand assembly.*

### **3. ASSEMBLY OF STAND**

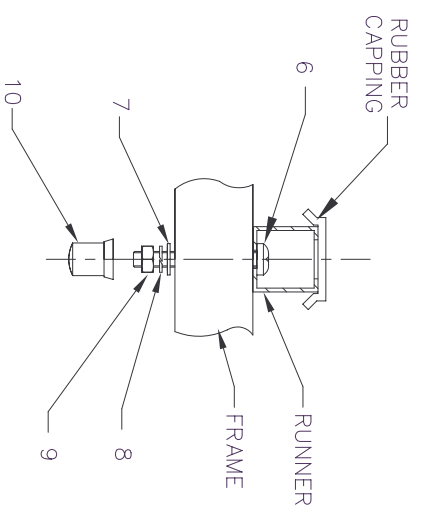
- 3.1 *Position each frame at the approximate relative frame spacing, with the base plates facing in the correct direction (if appropriate).*
- 3.2 *For each tier, loosely fix each cell supporting runner in position with the appropriate fixing arrangement (see detail 'A'). Do not tighten any fixing.*
- 3.3 *Place a length of the stated size of self adhesive backed neoprene, along the full length of the internal facing sides of each cell retention rail (see detail 'B'). Note: Inner retention rails will have neoprene on both faces.*
- 3.4 *Place a length of the stated size of self adhesive backed neoprene, along the internal face of each end frame retaining end brace (see detail 'B').*
- 3.5 *For each tier and row, loosely fix each cell retention rail in position with the appropriate fixing arrangement (see fixing detail 'B'). Do not tighten any fixing.*
- 3.6 *Loosely fix each tie bar in position with the appropriate fixing arrangement (see fixing detail 'C'). Do not tighten any fixing.*
- 3.7 *Ensure all parts are 'squared-off', i.e. 90 degrees relative to each other, then torque tighten each joint to the value stated below:-*  
M6 - 10 Nm  
M8 - 23 Nm
- 3.8 *Using the stand as a template, mark off and drill the fixing holes to the floor in accordance with the anchor suppliers instructions. Note : floor fixing bolts not supplied by Nirvana.*
- 3.9 *Fix the stand to the base substrate.*
- 3.10 *Use a spirit level to ensure the stand is sited correctly, and shim the base plates if necessary.*

### **4. PLACEMENT OF BATTERY BLOCKS**

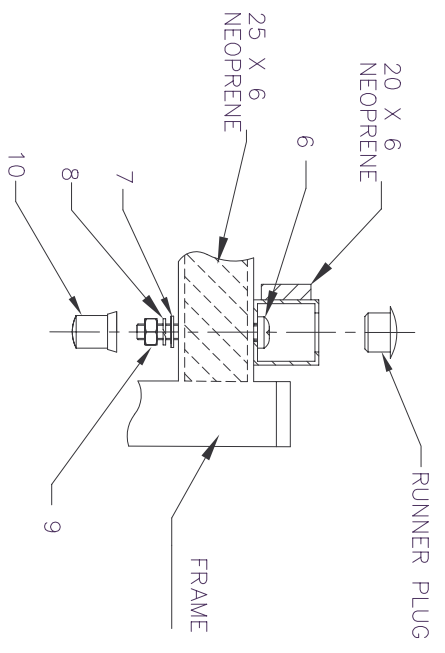
- 4.1 *Whilst retaining all other frame members in place, remove all frontmost cell retention rails (per tier).*

- 4.2 *Position the rubber, or 'h', capping strip (where supplied) on each runner, as highlighted on the main drawing.( See also detail 'A' )*
- 4.3 *Starting with the rear row and in accordance with the manufacturers guidelines, introduce each block / cell to each row.*
- 4.4 *On completing the accommodation of the row, re-position each relevant outstanding retention rail, and torque tighten each fixing.*
- 4.5 *Continue procedures 4.4 and 4.5 for each outstanding row.*
- 4.8 *In the event that the tie bars obscure, or interfere with, a row of batteries, remove each individual bar, as necessary, and replace at the earliest possible time.*
- 4.9 *For any incomplete row of battery blocks / cells, position the loose 'cross brace' (see fixing detail 'D'). This acts as a 'remote' frame end brace and the block / cell accommodation should take place with the cross brace already bolted in place.*
- 4.10 *Inter block / cell cabling should take place in line with the battery block / cell manufacturer's conditions, specifications and guidelines, as well as current Health and Safety procedures.*

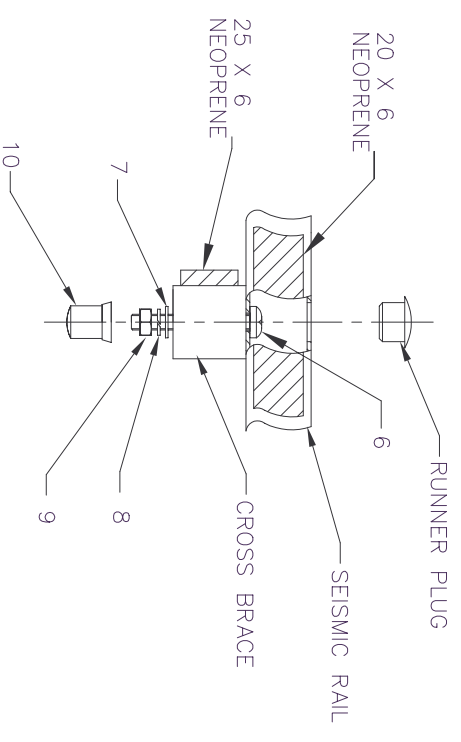
*If there is any aspect of the above list of instructions that appears unclear, or, does not cover an on-site problem, please do not hesitate to contact the above office, and we will endeavour to assist wherever possible.*



DETAIL 'A'  
RUNNER FIXING DETAIL

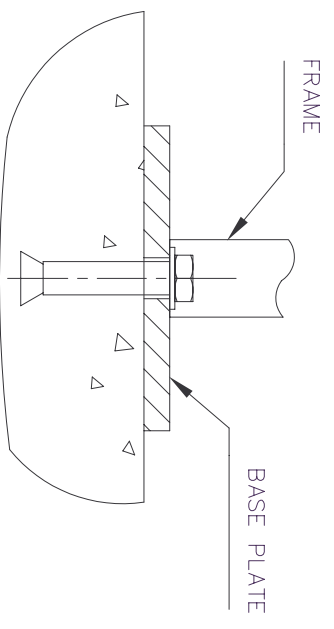


DETAIL 'B'  
SEISMIC RAIL FIXING DETAIL

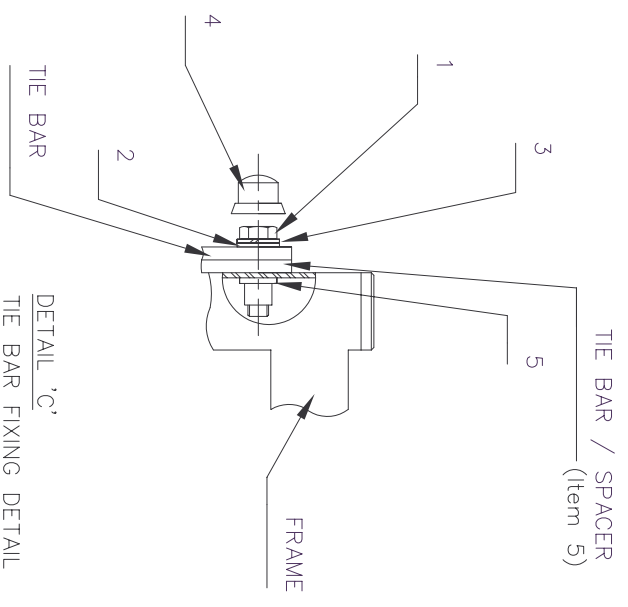


DETAIL 'D'  
CROSS BRACE FIXING DETAIL  
( FOR SHORT ROWS ONLY )

NOTE:  
THE ANCHOR BOLTS ARE NOT SUPPLIED BY NIRVANA . ALL BASE PLATE HOLE SIZES ARE SUITED FOR ANCHOR BOLTS/STUDS STATED ON SPECIFIC DETAIL DRAWING.



BASE PLATE FIXING DETAIL



DETAIL 'C'  
TIE BAR FIXING DETAIL

- FASTENERS INDEX:**
- Item 1 - M8 x 25 LG HEX.HD SCREW (BZP)
  - Item 2 - M8 PLAIN WASHER (BZP)
  - Item 3 - M8 SPRING WASHER (BZP)
  - Item 4 - M8 PLASTIC SHORT CAP
  - Item 5 - M8 PRE FITTED INSERT
  - Item 6 - M6 X 45 PAN HEAD SCREW
  - Item 7 - M6 PLAIN WASHER
  - Item 8 - M6 SPRING WASHER
  - Item 9 - M6 HEX NUT
  - Item 10 - M6 PLASTIC LONG CAP